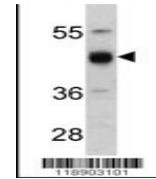
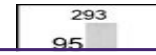
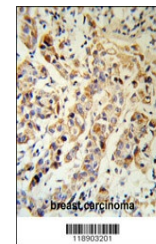

Product Datasheet

KRT13 Antibody (orb1263707)

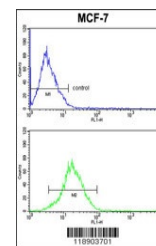
Description	KRT13 Antibody
Species/Host	Rabbit
Reactivity	Human
Conjugation	Unconjugated
Tested Applications	FC, IHC-P, WB
Immunogen	This KRT13 antibody is generated from rabbits immunized with a KLH conjugated synthetic peptide between 106-138 amino acids from the N-terminal region of human KRT13.
Target	KRT13
Preservatives	Supplied in PBS with 0.09% (W/V) sodium azide.
Form/Appearance	Liquid
Concentration	batch dependent
Storage	Store at 4°C for three months and -20°C, stable for up to one year. As with all antibodies care should be taken to avoid repeated freeze thaw cycles. Antibodies should not be exposed to prolonged high temperatures.
Note	For research use only
Application notes	For WB starting dilution is: 1:1000 For IHC-P starting dilution is: 1:50~100 For FACS starting dilution is: 1:10~50
Isotype	Rabbit Ig
Clonality	Polyclonal
MW	50 kDa
Uniprot ID	P13646
NCBI	P13646
Dilution Range	For WB starting dilution is: 1:1000 For IHC-P starting dilution is: 1:50~100 For FACS starting dilution is: 1:10~50
Expiration Date	12 months from date of receipt.



Western blot analysis of KRT13 antibody ...



KRT13 Antibody IHC analysis in formalin ...



KRT13 Antibody FC analysis of MCF-7 cell...