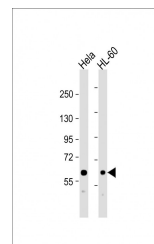


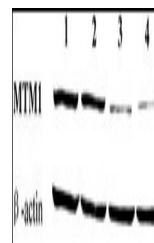
Product Datasheet

MTM1 Antibody (orb1263643)

Description	MTM1 Antibody
Species/Host	Rabbit
Reactivity	Human, Mouse
Conjugation	Unconjugated
Tested Applications	WB
Immunogen	This MTM1 antibody is generated from rabbits immunized with a KLH conjugated synthetic peptide between 566-594 amino acids from the C-terminal region of human MTM1.
Target	MTM1
Preservatives	Supplied in PBS with 0.09% (W/V) sodium azide.
Form/Appearance	Liquid
Concentration	batch dependent
Storage	Store at 4°C for three months and -20°C, stable for up to one year. As with all antibodies care should be taken to avoid repeated freeze thaw cycles. Antibodies should not be exposed to prolonged high temperatures.
Note	For research use only
Application notes	For WB starting dilution is: 1:1000
Isotype	Rabbit Ig
Clonality	Polyclonal
MW	70 kDa
Uniprot ID	Q13496
NCBI	Q13496
Dilution Range	For WB starting dilution is: 1:1000
Expiration Date	12 months from date of receipt.



Western Blot at 1:2000 dilution Lane 1: ...



Western blot showing knockdown of endoge...