
Product Datasheet

GALT Antibody (orb1263607)

Description

GALT Antibody

Species/Host

Rabbit

Reactivity

Human

Conjugation

Unconjugated

Tested Applications

FC, IHC-P, WB

Immunogen

This GALT antibody is generated from rabbits immunized with a KLH conjugated synthetic peptide between 344-373 amino acids from the C-terminal region of human GALT.

Target

GALT

Preservatives

Supplied in PBS with 0.09% (W/V) sodium azide.

Form/Appearance

Liquid

Concentration

batch dependent

Storage

Store at 4°C for three months and -20°C, stable for up to one year. As with all antibodies care should be taken to avoid repeated freeze thaw cycles. Antibodies should not be exposed to prolonged high temperatures.

Note

For research use only

Application notes

For WB starting dilution is: 1:1000 For IHC-P starting dilution is: 1:50~100 For FACS starting dilution is: 1:10~50

Isotype

Rabbit Ig

Clonality

Polyclonal

MW

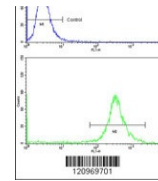
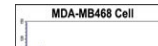
43 kDa

Uniprot ID
[P07902](#)
NCBI
[P07902](#)
Dilution Range

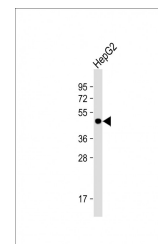
For WB starting dilution is: 1:1000 For IHC-P starting dilution is: 1:50~100 For FACS starting dilution is: 1:10~50

Expiration Date

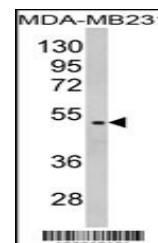
12 months from date of receipt.



Flow cytometric analysis of MDA-MB468 ce...



Western Blot at 1:1000 dilution + HepG2 ...



Western blot analysis of GALT Antibody i...