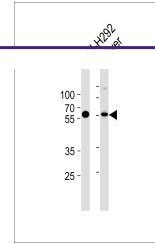
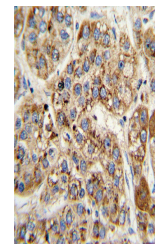

Product Datasheet

MCCC2 Antibody (orb1263585)

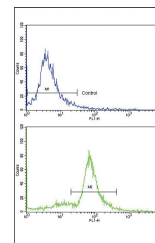
Description	MCCC2 Antibody
Species/Host	Rabbit
Reactivity	Human, Rat
Conjugation	Unconjugated
Tested Applications	FC, IHC-P, WB
Immunogen	This MCCC2 antibody is generated from rabbits immunized with a KLH conjugated synthetic peptide between 163-189 amino acids from the Central region of human MCCC2.
Target	MCCC2
Preservatives	Supplied in PBS with 0.09% (W/V) sodium azide.
Form/Appearance	Liquid
Concentration	batch dependent
Storage	Store at 4°C for three months and -20°C, stable for up to one year. As with all antibodies care should be taken to avoid repeated freeze thaw cycles. Antibodies should not be exposed to prolonged high temperatures.
Note	For research use only
Application notes	For WB starting dilution is: 1:1000For IHC-P starting dilution is: 1:10~50For FACS starting dilution is: 1:10~50
Isotype	Rabbit Ig
Clonality	Polyclonal
MW	61 kDa
Uniprot ID	Q9HCC0
NCBI	Q9HCC0
Dilution Range	For WB starting dilution is: 1:1000For IHC-P starting dilution is: 1:10~50For FACS starting dilution is: 1:10~50
Expiration Date	12 months from date of receipt.



Western blot analysis in NCI-H292 cell l...



Formalin-fixed and paraffin-embedded hum...



Flow cytometric analysis of ATDC5 cells ...