
Product Datasheet

PAX6 Antibody (orb1263581)

Description

PAX6 Antibody

Species/Host

Rabbit

Reactivity

Human, Rat

Conjugation

Unconjugated

Tested Applications

IF, IHC-P, WB

Immunogen

This PAX6 antibody is generated from rabbits immunized with a KLH conjugated synthetic peptide between 352-380 amino acids from human PAX6.

Target

PAX6

Preservatives

Supplied in PBS with 0.09% (W/V) sodium azide.

Form/Appearance

Liquid

Concentration

batch dependent

Storage

Store at 4°C for three months and -20°C, stable for up to one year. As with all antibodies care should be taken to avoid repeated freeze thaw cycles. Antibodies should not be exposed to prolonged high temperatures.

Note

For research use only

Application notes

For WB starting dilution is: 1:1000 For IHC-P starting dilution is: 1:10~50 For IF starting dilution is: 1:10~50

Isotype

Rabbit Ig

Clonality

Polyclonal

MW

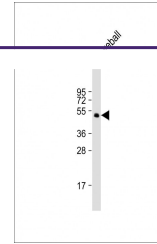
47 kDa

Uniprot ID
[P26367](#)
NCBI
[P26367](#)
Dilution Range

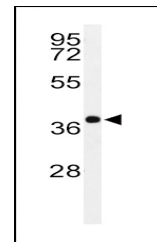
For WB starting dilution is: 1:1000 For IHC-P starting dilution is: 1:10~50 For IF starting dilution is: 1:10~50

Expiration Date

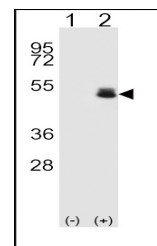
12 months from date of receipt.



Western Blot at 1:2000 dilution + rat ey...



Western blot analysis of PAX6-T373 in Y7...



Western blot analysis of PAX6 using rabb...