
Product Datasheet

ITGAX Antibody (orb1263555)

Description

ITGAX Antibody

Species/Host

Rabbit

Reactivity

Human

Conjugation

Unconjugated

Tested Applications

FC, IF, IHC-P, WB

Immunogen

This ITGAX antibody is generated from rabbits immunized with a KLH conjugated synthetic peptide between 1119-1145 amino acids from the C-terminal region of human ITGAX.

Target

ITGAX

Preservatives

Supplied in PBS with 0.09% (W/V) sodium azide.

Form/Appearance

Liquid

Concentration

batch dependent

Storage

Store at 4°C for three months and -20°C, stable for up to one year. As with all antibodies care should be taken to avoid repeated freeze thaw cycles. Antibodies should not be exposed to prolonged high temperatures.

Note

For research use only

Application notes

For WB starting dilution is: 1:1000
For IHC-P starting dilution is: 1:50~100
For FACS starting dilution is: 1:10~50
For IF starting dilution is: 1:10~50

Isotype

Rabbit Ig

Clonality

Polyclonal

MW

128 kDa

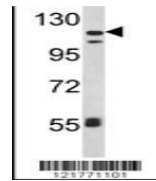
Uniprot ID
[P20702](#)
NCBI
[P20702](#)
Dilution Range

For WB starting dilution is: 1:1000
For IHC-P starting dilution is: 1:50~100
For FACS starting dilution is: 1:10~50
For IF starting dilution is: 1:10~50

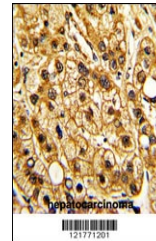
Expiration Date

12 months from date of receipt.

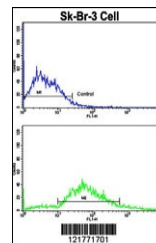
MDA-MB231



Western blot analysis of ITGAX Antibody ...



Formalin-fixed and paraffin-embedded hum...



Flow cytometric analysis of SK-Br-3 cell...