
Product Datasheet

GRK5 Antibody (orb1263542)

Description

GRK5 Antibody

Species/Host

Rabbit

Reactivity

Human, Mouse

Conjugation

Unconjugated

Tested

IHC-P, WB

Applications
Immunogen

This GRK5 antibody is generated from rabbits immunized with a KLH conjugated synthetic peptide between 559-590 amino acids from the C-terminal region of human GRK5.

Target

GRK5

Preservatives

Supplied in PBS with 0.09% (W/V) sodium azide.

Form/Appearance

Liquid

Concentration

batch dependent

Storage

Store at 4°C for three months and -20°C, stable for up to one year. As with all antibodies care should be taken to avoid repeated freeze thaw cycles. Antibodies should not be exposed to prolonged high temperatures.

Note

For research use only

Application notes

For WB starting dilution is: 1:2000
For IHC-P starting dilution is: 1:50~100
For IHC-P starting dilution is: 1:50~100

Isotype

Rabbit Ig

Clonality

Polyclonal

MW

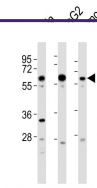
68 kDa

Uniprot ID
[P34947](#)
NCBI
[P34947](#)
Dilution Range

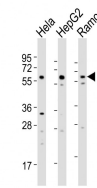
For WB starting dilution is: 1:2000
For IHC-P starting dilution is: 1:50~100
For IHC-P starting dilution is: 1:50~100

Expiration Date

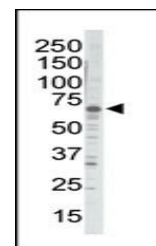
12 months from date of receipt.



Western Blot
at 1:2000
dilution Lane
1: ...



Western Blot
at 1:2000
dilution Lane
1: ...



Western blot
analysis of
anti-GRK5
Pab i...