
Product Datasheet

PKLR Antibody (orb1263513)

Description

PKLR Antibody

Species/Host

Rabbit

Reactivity

Human, Mouse

Conjugation

Unconjugated

Tested Applications

IHC-P, WB

Immunogen

This PKLR antibody is generated from rabbits immunized with a KLH conjugated synthetic peptide between 521-551 amino acids from the C-terminal region of human PKLR.

Target

PKLR

Preservatives

Supplied in PBS with 0.09% (W/V) sodium azide.

Form/Appearance

Liquid

Concentration

batch dependent

Storage

Store at 4°C for three months and -20°C, stable for up to one year. As with all antibodies care should be taken to avoid repeated freeze thaw cycles. Antibodies should not be exposed to prolonged high temperatures.

Note

For research use only

Application notes

For IHC-P starting dilution is: 1:50~100 For WB starting dilution is: 1:1000

Isotype

Rabbit Ig

Clonality

Polyclonal

MW

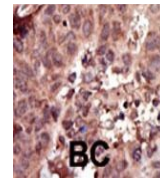
62 kDa

Uniprot ID
[P30613](#)
NCBI
[P30613](#)
Dilution Range

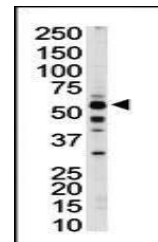
For IHC-P starting dilution is: 1:50~100 For WB starting dilution is: 1:1000

Expiration Date

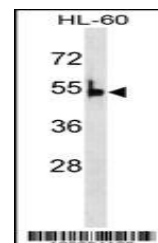
12 months from date of receipt.



Formalin-fixed and paraffin-embedded hum...



Antibody is used in Western blot to dete...



Western blot analysis in HL-60 cell line...