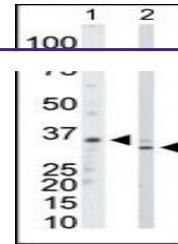
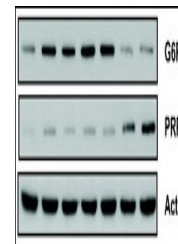

Product Datasheet

PRPS1 Antibody (orb1263502)

Description	PRPS1 Antibody
Species/Host	Rabbit
Reactivity	Human, Mouse
Conjugation	Unconjugated
Tested Applications	WB
Immunogen	This PRPS1/PRPS2/PRPS3 antibody is generated from rabbits immunized with a KLH conjugated synthetic peptide between 79-109 amino acids from the N-terminal region of human PRPS1/PRPS2/PRPS3.
Target	PRPS1
Preservatives	Supplied in PBS with 0.09% (W/V) sodium azide.
Form/Appearance	Liquid
Concentration	batch dependent
Storage	Store at 4°C for three months and -20°C, stable for up to one year. As with all antibodies care should be taken to avoid repeated freeze thaw cycles. Antibodies should not be exposed to prolonged high temperatures.
Note	For research use only
Application notes	For WB starting dilution is: 1:1000
Isotype	Rabbit Ig
Clonality	Polyclonal
MW	35 kDa
Uniprot ID	P60891
NCBI	P60891
Dilution Range	For WB starting dilution is: 1:1000
Expiration Date	12 months from date of receipt.



Antibody is used in Western blot to detect...



Role of PPP during MSC transformation. (...)