
Product Datasheet

DCK Antibody (orb1263479)

Description

DCK Antibody

Species/Host

Rabbit

Reactivity

Human, Mouse

Conjugation

Unconjugated

Tested Applications

IF, IHC-P, IP, WB

Immunogen

This DCK antibody is generated from rabbits immunized with a KLH conjugated synthetic peptide between 171-200 amino acids from the C-terminal region of human DCK.

Target

DCK

Preservatives

Supplied in PBS with 0.09% (W/V) sodium azide.

Form/Appearance

Liquid

Concentration

batch dependent

Storage

Store at 4°C for three months and -20°C, stable for up to one year. As with all antibodies care should be taken to avoid repeated freeze thaw cycles. Antibodies should not be exposed to prolonged high temperatures.

Note

For research use only

Application notes

For IHC-P starting dilution is: 1:10~50
For IF starting dilution is: 1:10~50
For WB starting dilution is: 1:1000
For IP starting dilution is: 1:500~1000

Isotype

Rabbit Ig

Clonality

Polyclonal

MW

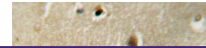
31 kDa

Uniprot ID
[P27707](#)
NCBI
[P27707](#)
Dilution Range

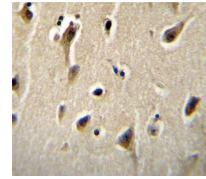
For IHC-P starting dilution is: 1:10~50
For IF starting dilution is: 1:10~50
For WB starting dilution is: 1:1000
For IP starting dilution is: 1:500~1000

Expiration Date

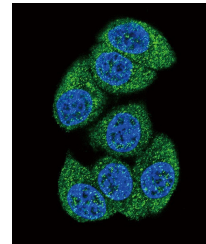
12 months from date of receipt.



DCK Antibody immunohistochemistry analysis...



Confocal immunofluorescent analysis of D...



Antibody is used in Western blot to dete...

