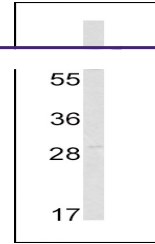
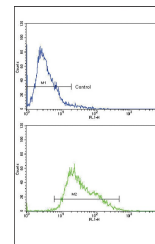

Product Datasheet

AMHR2 Antibody (orb1263462)

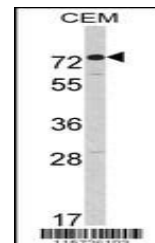
Description	AMHR2 Antibody
Species/Host	Rabbit
Reactivity	Human
Conjugation	Unconjugated
Tested Applications	FC, WB
Immunogen	This AMHR2 antibody is generated from rabbits immunized with a KLH conjugated synthetic peptide between 374-402 amino acids from the C-terminal region of human AMHR2.
Target	AMHR2
Preservatives	Supplied in PBS with 0.09% (W/V) sodium azide.
Form/Appearance	Liquid
Concentration	batch dependent
Storage	Store at 4°C for three months and -20°C, stable for up to one year. As with all antibodies care should be taken to avoid repeated freeze thaw cycles. Antibodies should not be exposed to prolonged high temperatures.
Note	For research use only
Application notes	For WB starting dilution is: 1:1000 For FACS starting dilution is: 1:10~50
Isotype	Rabbit Ig
Clonality	Polyclonal
MW	63 kDa
Uniprot ID	Q16671
NCBI	Q16671
Dilution Range	For WB starting dilution is: 1:1000 For FACS starting dilution is: 1:10~50
Expiration Date	12 months from date of receipt.



Western blot analysis of AMHR2 Antibody ...



Flow cytometric analysis of CEM cells us...



Western blot analysis of AMHR2 Antibody ...