
Product Datasheet

GUCY1A2 Antibody (orb1263453)

Description

GUCY1A2 Antibody

Species/Host

Rabbit

Reactivity

Human, Mouse

Conjugation

Unconjugated

Tested

IHC-P, WB

Applications
Immunogen

This Guanylyl Cyclase alpha 2 (GUCY1A2) antibody is generated from rabbits immunized with a KLH conjugated synthetic peptide between 105-136 amino acids from the N-terminal region of human Guanylyl Cyclase alpha 2 (GUCY1A2).

Target

GUCY1A2

Preservatives

Supplied in PBS with 0.09% (W/V) sodium azide.

Form/Appearance

Liquid

Concentration

batch dependent

Storage

Store at 4°C for three months and -20°C, stable for up to one year. As with all antibodies care should be taken to avoid repeated freeze thaw cycles. Antibodies should not be exposed to prolonged high temperatures.

Note

For research use only

Application notes

For IHC-P starting dilution is: 1:50~100 For WB starting dilution is: 1:1000

Isotype

Rabbit Ig

Clonality

Polyclonal

MW

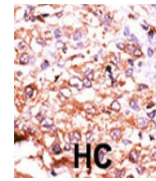
82 kDa

Uniprot ID
[P33402](#)
NCBI
[P33402](#)
Dilution Range

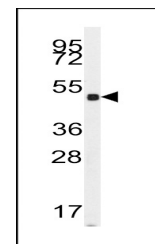
For IHC-P starting dilution is: 1:50~100 For WB starting dilution is: 1:1000

Expiration Date

12 months from date of receipt.



Formalin-fixed and paraffin-embedded hum...



Western blot analysis of anti-GUCY1A2 An...