

---

## Product Datasheet

### RIOK1 Antibody (orb1263407)

**Description**

RIOK1 Antibody


**Species/Host**

Rabbit

**Reactivity**

Human

**Conjugation**

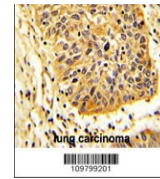
Unconjugated

**Tested Applications**

IHC-P, WB

**Immunogen**

This RIOK1 antibody is generated from rabbits immunized with a KLH conjugated synthetic peptide between 126-156 amino acids from the N-terminal region of human RIOK1.



Formalin-fixed and paraffin-embedded hum...

**Target**

RIOK1

**Preservatives**

Supplied in PBS with 0.09% (W/V) sodium azide.

**Form/Appearance**

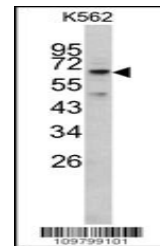
Liquid

**Concentration**

batch dependent

**Storage**

Store at 4°C for three months and -20°C, stable for up to one year. As with all antibodies care should be taken to avoid repeated freeze thaw cycles. Antibodies should not be exposed to prolonged high temperatures.



Western blot analysis of RIOK1 antibody ...

**Note**

For research use only

**Application notes**

For IHC-P starting dilution is: 1:50~100For WB starting dilution is: 1:1000

**Isotype**

Rabbit Ig

**Clonality**

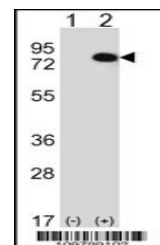
Polyclonal

**MW**

66 kDa

**Uniprot ID**
[Q9BRS2](#)
**NCBI**
[Q9BRS2](#)
**Dilution Range**

For IHC-P starting dilution is: 1:50~100For WB starting dilution is: 1:1000



Western blot analysis of RIOK1 using rab...

**Expiration Date**

12 months from date of receipt.