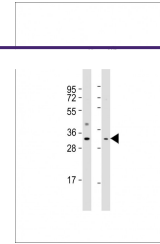
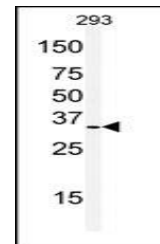

Product Datasheet

PHB2 Antibody (orb1263353)

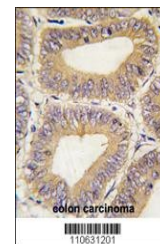
Description	PHB2 Antibody
Species/Host	Rabbit
Reactivity	Human
Conjugation	Unconjugated
Tested Applications	IHC-P, WB
Immunogen	This REA (PHB2) antibody is generated from rabbits immunized with a KLH conjugated synthetic peptide between 197-226 amino acids from the C-terminal region of human REA (PHB2).
Target	PHB2
Preservatives	Supplied in PBS with 0.09% (W/V) sodium azide.
Form/Appearance	Liquid
Concentration	batch dependent
Storage	Store at 4°C for three months and -20°C, stable for up to one year. As with all antibodies care should be taken to avoid repeated freeze thaw cycles. Antibodies should not be exposed to prolonged high temperatures.
Note	For research use only
Application notes	For WB starting dilution is: 1:1000 For IHC-P starting dilution is: 1:10~50
Isotype	Rabbit Ig
Clonality	Polyclonal
MW	33 kDa
Uniprot ID	Q99623
NCBI	Q99623
Dilution Range	For WB starting dilution is: 1:1000 For IHC-P starting dilution is: 1:10~50
Expiration Date	12 months from date of receipt.



Western Blot at 1:1000 dilution Lane 1: ...



Western blot analysis of anti-PHB2 Antib...



Formalin-fixed and paraffin-embedded hum...