

---

## Product Datasheet

### NPTX1 Antibody (orb1263348)

**Description**

NPTX1 Antibody

**Species/Host**

Rabbit

**Reactivity**

Human, Mouse, Rat

**Conjugation**

Unconjugated

**Tested Applications**

IHC-P, WB

**Immunogen**

This NPTX1 antibody is generated from rabbits immunized with a KLH conjugated synthetic peptide between 322-350 amino acids from human NPTX1.

**Target**

NPTX1

**Preservatives**

Supplied in PBS with 0.09% (W/V) sodium azide.

**Form/Appearance**

Liquid

**Concentration**

batch dependent

**Storage**

Store at 4°C for three months and -20°C, stable for up to one year. As with all antibodies care should be taken to avoid repeated freeze thaw cycles. Antibodies should not be exposed to prolonged high temperatures.

**Note**

For research use only

**Application notes**

For IHC-P starting dilution is: 1:25 For WB starting dilution is: 1:1000

**Isotype**

Rabbit Ig

**Clonality**

Polyclonal

**MW**

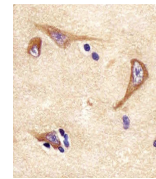
47 kDa

**Uniprot ID**
[Q15818](#)
**NCBI**
[Q15818](#)
**Dilution Range**

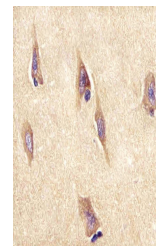
For IHC-P starting dilution is: 1:25 For WB starting dilution is: 1:1000

**Expiration Date**

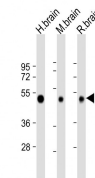
12 months from date of receipt.



Antibody staining NPTX1 in human brain t...



Antibody staining NPTX1 in human brain t...



Western Blot at 1:2000 dilution Lane 1: ...