
Product Datasheet

CA2 Antibody (orb1263325)

Description

CA2 Antibody

Species/Host

Rabbit

Reactivity

Human, Mouse

Conjugation

Unconjugated

Tested Applications

IF, WB

Immunogen

This CA2 antibody is generated from rabbits immunized with a KLH conjugated synthetic peptide between 54-83 amino acids from the N-terminal region of human CA2.

Target

CA2

Preservatives

Supplied in PBS with 0.09% (W/V) sodium azide.

Form/Appearance

Liquid

Concentration

batch dependent

Storage

Store at 4°C for three months and -20°C, stable for up to one year. As with all antibodies care should be taken to avoid repeated freeze thaw cycles. Antibodies should not be exposed to prolonged high temperatures.

Note

For research use only

Application notes

For WB starting dilution is: 1:1000 For IF starting dilution is: 1:10~50

Isotype

Rabbit Ig

Clonality

Polyclonal

MW

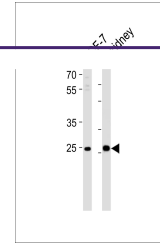
29 kDa

Uniprot ID
P00918
NCBI
P00918
Dilution Range

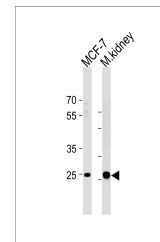
For WB starting dilution is: 1:1000 For IF starting dilution is: 1:10~50

Expiration Date

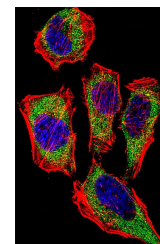
12 months from date of receipt.



Western blot analysis of lysates from MC...



Western blot analysis in MCF-7 cell line...



Fluorescent confocal image of HeLa cell ...