
Product Datasheet

FGG Antibody (orb1263309)

Description

FGG Antibody

Species/Host

Rabbit

Reactivity

Human

Conjugation

Unconjugated

Tested Applications

FC, IF, WB

Immunogen

This FGG antibody is generated from rabbits immunized with a KLH conjugated synthetic peptide between 91-118 amino acids from the N-terminal region of human FGG.

Target

FGG

Preservatives

Supplied in PBS with 0.09% (W/V) sodium azide.

Form/Appearance

Liquid

Concentration

batch dependent

Storage

Store at 4°C for three months and -20°C, stable for up to one year. As with all antibodies care should be taken to avoid repeated freeze thaw cycles. Antibodies should not be exposed to prolonged high temperatures.

Note

For research use only

Application notes

For WB starting dilution is: 1:1000 For FACS starting dilution is: 1:10~50 For IF starting dilution is: 1:10~50

Isotype

Rabbit Ig

Clonality

Polyclonal

MW

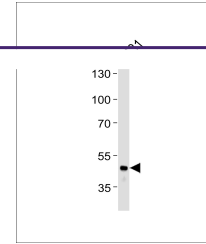
52 kDa

Uniprot ID
[P02679](#)
NCBI
[P02679](#)
Dilution Range

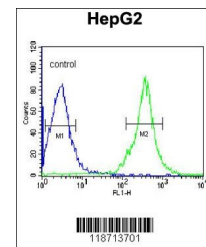
For WB starting dilution is: 1:1000 For FACS starting dilution is: 1:10~50 For IF starting dilution is: 1:10~50

Expiration Date

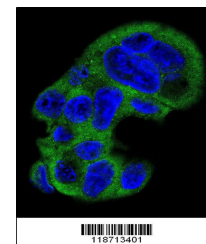
12 months from date of receipt.



Western blot analysis in A431 cell line ...



Flow cytometric analysis of HepG2 cells ...



Confocal immunofluorescent analysis of F...