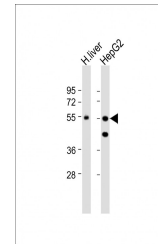


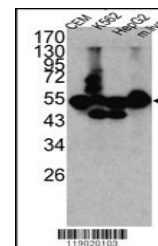
Product Datasheet

CPN1 Antibody (orb1263299)

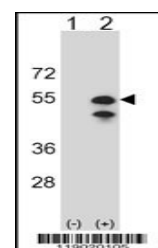
Description	CPN1 Antibody
Species/Host	Rabbit
Reactivity	Human, Mouse
Conjugation	Unconjugated
Tested Applications	WB
Immunogen	This CPN1 antibody is generated from rabbits immunized with a KLH conjugated synthetic peptide between 52-81 amino acids from the N-terminal region of human CPN1.
Target	CPN1
Preservatives	Supplied in PBS with 0.09% (W/V) sodium azide.
Form/Appearance	Liquid
Concentration	batch dependent
Storage	Store at 4°C for three months and -20°C, stable for up to one year. As with all antibodies care should be taken to avoid repeated freeze thaw cycles. Antibodies should not be exposed to prolonged high temperatures.
Note	For research use only
Application notes	For WB starting dilution is: 1:1000
Isotype	Rabbit Ig
Clonality	Polyclonal
MW	52 kDa
Uniprot ID	P15169
NCBI	P15169
Dilution Range	For WB starting dilution is: 1:1000
Expiration Date	12 months from date of receipt.



Western Blot at 1:1000 dilution Lane 1: ...



Western blot analysis of CPN1 antibody i...



Western blot analysis of CPN1 using rabb...