
Product Datasheet

S100A6 Antibody (orb1263288)

Description

S100A6 Antibody

Species/Host

Rabbit

Reactivity

Human, Mouse

Conjugation

Unconjugated

Tested Applications

FC, WB

Immunogen

This S100A6 antibody is generated from rabbits immunized with a KLH conjugated synthetic peptide between 37-67 amino acids from the C-terminal region of human S100A6.

Target

S100A6

Preservatives

Supplied in PBS with 0.09% (W/V) sodium azide.

Form/Appearance

Liquid

Concentration

batch dependent

Storage

Store at 4°C for three months and -20°C, stable for up to one year. As with all antibodies care should be taken to avoid repeated freeze thaw cycles. Antibodies should not be exposed to prolonged high temperatures.

Note

For research use only

Application notes

For WB starting dilution is: 1:1000 For FACS starting dilution is: 1:10~50

Isotype

Rabbit Ig

Clonality

Polyclonal

MW

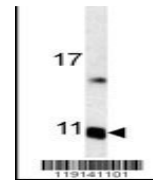
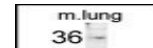
10 kDa

Uniprot ID
[P06703](#)
NCBI
[P06703](#)
Dilution Range

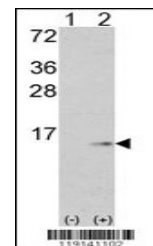
For WB starting dilution is: 1:1000 For FACS starting dilution is: 1:10~50

Expiration Date

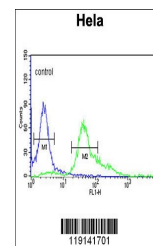
12 months from date of receipt.



Western blot analysis of S100A6 antibody...



Western blot analysis of S100A6 using ra...



Flow cytometric analysis of HeLa cells (...)