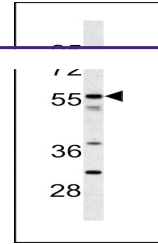
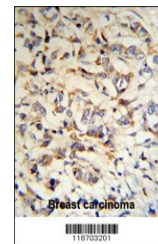

Product Datasheet

CPN2 Antibody (orb1263287)

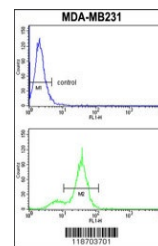
Description	CPN2 Antibody
Species/Host	Rabbit
Reactivity	Human
Conjugation	Unconjugated
Tested Applications	FC, IHC-P, WB
Immunogen	This CPN2 antibody is generated from rabbits immunized with a KLH conjugated synthetic peptide between 74-103 amino acids from the N-terminal region of human CPN2.
Target	CPN2
Preservatives	Supplied in PBS with 0.09% (W/V) sodium azide.
Form/Appearance	Liquid
Concentration	batch dependent
Storage	Store at 4°C for three months and -20°C, stable for up to one year. As with all antibodies care should be taken to avoid repeated freeze thaw cycles. Antibodies should not be exposed to prolonged high temperatures.
Note	For research use only
Application notes	For WB starting dilution is: 1:1000For IHC-P starting dilution is: 1:50~100For FACS starting dilution is: 1:10~50
Isotype	Rabbit Ig
Clonality	Polyclonal
MW	61 kDa
Uniprot ID	P22792
NCBI	P22792
Dilution Range	For WB starting dilution is: 1:1000For IHC-P starting dilution is: 1:50~100For FACS starting dilution is: 1:10~50
Expiration Date	12 months from date of receipt.



Western blot analysis of CPN2 antibody i...



CPN2 Antibody IHC analysis in formalin f...



Flow cytometry analysis of MDA-MB231 cel...