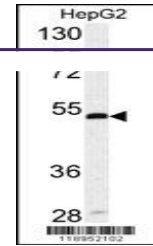
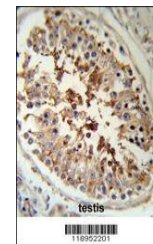

Product Datasheet

SERPINH1 Antibody (orb1263275)

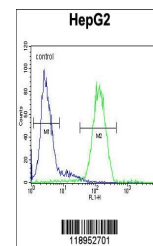
Description	SERPINH1 Antibody
Species/Host	Rabbit
Reactivity	Human
Conjugation	Unconjugated
Tested Applications	FC, IHC-P, WB
Immunogen	This SERPINH1 antibody is generated from rabbits immunized with a KLH conjugated synthetic peptide between 169-196 amino acids from the Central region of human SERPINH1.
Target	SERPINH1
Preservatives	Supplied in PBS with 0.09% (W/V) sodium azide.
Form/Appearance	Liquid
Concentration	batch dependent
Storage	Store at 4°C for three months and -20°C, stable for up to one year. As with all antibodies care should be taken to avoid repeated freeze thaw cycles. Antibodies should not be exposed to prolonged high temperatures.
Note	For research use only
Application notes	For WB starting dilution is: 1:1000For IHC-P starting dilution is: 1:50~100For FACS starting dilution is: 1:10~50
Isotype	Rabbit Ig
Clonality	Polyclonal
MW	46 kDa
Uniprot ID	P50454
NCBI	P50454
Dilution Range	For WB starting dilution is: 1:1000For IHC-P starting dilution is: 1:50~100For FACS starting dilution is: 1:10~50
Expiration Date	12 months from date of receipt.



Western blot analysis of SERPINH1 antibody...



SERPINH1 Antibody IHC analysis in formalin...



Flow cytometric analysis of HepG2 cells ...