
Product Datasheet

KRT18 Antibody (orb1263271)

Description

KRT18 Antibody

Species/Host

Rabbit

Reactivity

Human, Mouse

Conjugation

Unconjugated

Tested Applications

FC, IF, IHC-P, WB

Immunogen

This CYK18 antibody is generated from rabbits immunized with a KLH conjugated synthetic peptide between 401-430 amino acids from the C-terminal region of human CYK18.

Target

KRT18

Preservatives

Supplied in PBS with 0.09% (W/V) sodium azide.

Form/Appearance

Liquid

Concentration

batch dependent

Storage

Store at 4°C for three months and -20°C, stable for up to one year. As with all antibodies care should be taken to avoid repeated freeze thaw cycles. Antibodies should not be exposed to prolonged high temperatures.

Note

For research use only

Application notes

For IF starting dilution is: 1:25
For FACS starting dilution is: 1:25

Isotype

Rabbit Ig

Clonality

Polyclonal

MW

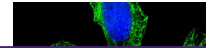
48 kDa

Uniprot ID
[P05783](#)
NCBI
[P05783](#)
Dilution Range

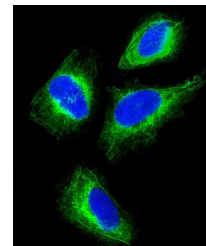
For IF starting dilution is: 1:25
For FACS starting dilution is: 1:25

Expiration Date

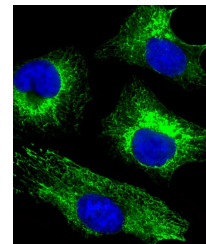
12 months from date of receipt.



Immunofluorescent analysis of 4% parafor...



Immunofluorescent analysis of 4% parafor...



Immunofluorescent analysis of 4% parafor...