
Product Datasheet

ANXA2 Antibody (orb1263234)

Description

ANXA2 Antibody

Species/Host

Rabbit

Reactivity

Human, Mouse

Conjugation

Unconjugated

Tested Applications

IHC-P, WB

Immunogen

This ANXA2 antibody is generated from rabbits immunized with a KLH conjugated synthetic peptide between 19-49 amino acids from the N-terminal region of human ANXA2.

Target

ANXA2

Preservatives

Supplied in PBS with 0.09% (W/V) sodium azide.

Form/Appearance

Liquid

Concentration

batch dependent

Storage

Store at 4°C for three months and -20°C, stable for up to one year. As with all antibodies care should be taken to avoid repeated freeze thaw cycles. Antibodies should not be exposed to prolonged high temperatures.

Note

For research use only

Application notes

For IHC-P starting dilution is: 1:25 For WB starting dilution is: 1:1000

Isotype

Rabbit Ig

Clonality

Polyclonal

MW

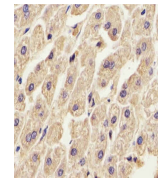
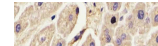
39 kDa

Uniprot ID
[P07355](#)
NCBI
[P07355](#)
Dilution Range

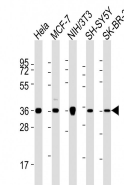
For IHC-P starting dilution is: 1:25 For WB starting dilution is: 1:1000

Expiration Date

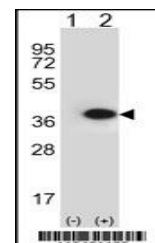
12 months from date of receipt.



Antibody staining ANXA2 in Human liver t...



Western Blot at 1:2000 dilution Lane 1: ...



Western blot analysis of ANXA2 using rab...