
Product Datasheet

ANXA2 Antibody (orb1263233)

Description

ANXA2 Antibody

Species/Host

Rabbit

Reactivity

Human

Conjugation

Unconjugated

Tested Applications

IF, IHC-P, WB

Immunogen

This ANXA2 antibody is generated from rabbits immunized with a KLH conjugated synthetic peptide between 287-313 amino acids from the C-terminal region of human ANXA2.

Target

ANXA2

Preservatives

Supplied in PBS with 0.09% (W/V) sodium azide.

Form/Appearance

Liquid

Concentration

batch dependent

Storage

Store at 4°C for three months and -20°C, stable for up to one year. As with all antibodies care should be taken to avoid repeated freeze thaw cycles. Antibodies should not be exposed to prolonged high temperatures.

Note

For research use only

Application notes

For WB starting dilution is: 1:1000 For IHC-P starting dilution is: 1:10~50 For IF starting dilution is: 1:10~50

Isotype

Rabbit Ig

Clonality

Polyclonal

MW

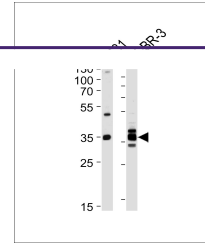
39 kDa

Uniprot ID
[P07355](#)
NCBI
[P07355](#)
Dilution Range

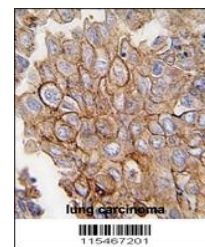
For WB starting dilution is: 1:1000 For IHC-P starting dilution is: 1:10~50 For IF starting dilution is: 1:10~50

Expiration Date

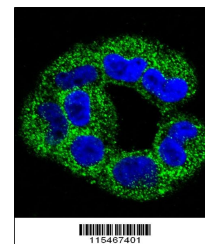
12 months from date of receipt.



Western blot analysis of lysates from A4...



Formalin-fixed and paraffin-embedded hum...



Confocal immunofluorescent analysis of A...