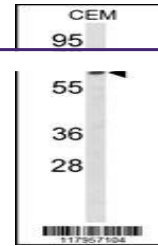


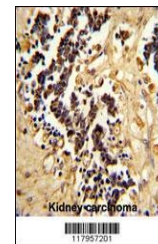
Product Datasheet

EHD3 Antibody (orb1263205)

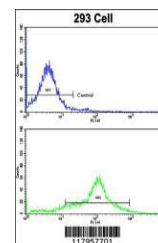
Description	EHD3 Antibody
Species/Host	Rabbit
Reactivity	Human
Conjugation	Unconjugated
Tested Applications	FC, IHC-P, WB
Immunogen	This EHD3 antibody is generated from rabbits immunized with a KLH conjugated synthetic peptide between 189-216 amino acids from the Central region of human EHD3.
Target	EHD3
Preservatives	Supplied in PBS with 0.09% (W/V) sodium azide.
Form/Appearance	Liquid
Concentration	batch dependent
Storage	Store at 4°C for three months and -20°C, stable for up to one year. As with all antibodies care should be taken to avoid repeated freeze thaw cycles. Antibodies should not be exposed to prolonged high temperatures.
Note	For research use only
Application notes	For WB starting dilution is: 1:1000For IHC-P starting dilution is: 1:50~100For FACS starting dilution is: 1:10~50
Isotype	Rabbit Ig
Clonality	Polyclonal
MW	61 kDa
Uniprot ID	Q9NZN3
NCBI	Q9NZN3
Dilution Range	For WB starting dilution is: 1:1000For IHC-P starting dilution is: 1:50~100For FACS starting dilution is: 1:10~50
Expiration Date	12 months from date of receipt.



Western blot analysis of EHD3 Antibody i...



Formalin-fixed and paraffin-embedded hum...



Flow cytometric analysis of 293 cells us...