
Product Datasheet

GPT Antibody (orb1263197)

Description

GPT Antibody

Species/Host

Rabbit

Reactivity

Human, Mouse, Rat

Conjugation

Unconjugated

Tested

IHC-P, WB

Applications
Immunogen

This GPT antibody is generated from rabbits immunized with a KLH conjugated synthetic peptide between 118-144 amino acids from the N-terminal region of human GPT.

Target

GPT

Preservatives

Supplied in PBS with 0.09% (W/V) sodium azide.

Form/Appearance

Liquid

Concentration

batch dependent

Storage

Store at 4°C for three months and -20°C, stable for up to one year. As with all antibodies care should be taken to avoid repeated freeze thaw cycles. Antibodies should not be exposed to prolonged high temperatures.

Note

For research use only

Application notes

For IHC-P starting dilution is: 1:100 For WB starting dilution is: 1:1000

Isotype

Rabbit Ig

Clonality

Polyclonal

MW

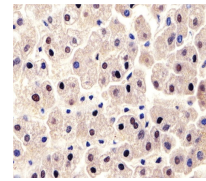
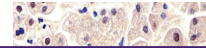
55 kDa

Uniprot ID
[P24298](#)
NCBI
[P24298](#)
Dilution Range

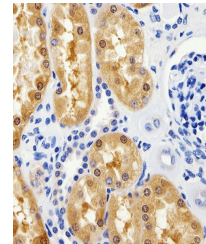
For IHC-P starting dilution is: 1:100 For WB starting dilution is: 1:1000

Expiration Date

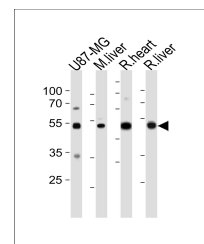
12 months from date of receipt.



Immunohistochemical analysis of paraffin...



Immunohistochemical analysis of paraffin...



Western blot analysis in U87-MG cell lin...