

---

## Product Datasheet

### PCM1 Antibody (orb1263190)

**Description**

PCM1 Antibody

**Species/Host**

Rabbit

**Reactivity**

Human

**Conjugation**

Unconjugated

**Tested Applications**

FC, IF, IHC-P, WB

**Immunogen**

This PCM-1 antibody is generated from rabbits immunized with a KLH conjugated synthetic peptide between 632-661 amino acids from the Central region of human PCM-1.

**Target**

PCM1

**Preservatives**

Supplied in PBS with 0.09% (W/V) sodium azide.

**Form/Appearance**

Liquid

**Concentration**

batch dependent

**Storage**

Store at 4°C for three months and -20°C, stable for up to one year. As with all antibodies care should be taken to avoid repeated freeze thaw cycles. Antibodies should not be exposed to prolonged high temperatures.

**Note**

For research use only

**Application notes**

For IF starting dilution is: 1:10~50  
For WB starting dilution is: 1:1000  
For IHC-P starting dilution is: 1:50~100  
For FACS starting dilution is: 1:10~50

**Isotype**

Rabbit Ig

**Clonality**

Polyclonal

**MW**

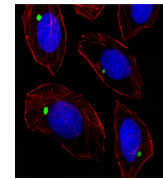
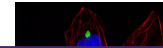
229 kDa

**Uniprot ID**
[Q15154](#)
**NCBI**
[Q15154](#)
**Dilution Range**

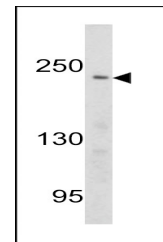
For IF starting dilution is: 1:10~50  
For WB starting dilution is: 1:1000  
For IHC-P starting dilution is: 1:50~100  
For FACS starting dilution is: 1:10~50

**Expiration Date**

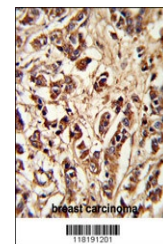
12 months from date of receipt.



Fluorescent image of A549 cell stained w...



Western blot analysis of PCM-1 antibody ...



Formalin-fixed and paraffin-embedded hum...