
Product Datasheet

MAPK14 Antibody (orb1263156)

Description

MAPK14 Antibody

Species/Host

Rabbit

Reactivity

Human

Conjugation

Unconjugated

Tested Applications

FC, IF, WB

Applications
Immunogen

This MAPK14 antibody is generated from rabbits immunized with a KLH conjugated synthetic peptide between 295-324 amino acids from the C-terminal region of human MAPK14.

Target

MAPK14

Preservatives

Supplied in PBS with 0.09% (W/V) sodium azide.

Form/Appearance

Liquid

Concentration

batch dependent

Storage

Store at 4°C for three months and -20°C, stable for up to one year. As with all antibodies care should be taken to avoid repeated freeze thaw cycles. Antibodies should not be exposed to prolonged high temperatures.

Note

For research use only

Application notes

For WB starting dilution is: 1:1000 For FACS starting dilution is: 1:10~50 For IF starting dilution is: 1:10~50

Isotype

Rabbit Ig

Clonality

Polyclonal

MW

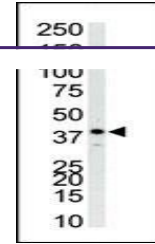
41 kDa

Uniprot ID
[Q16539](#)
NCBI
[Q16539](#)
Dilution Range

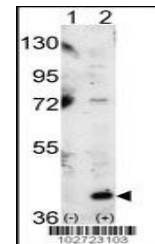
For WB starting dilution is: 1:1000 For FACS starting dilution is: 1:10~50 For IF starting dilution is: 1:10~50

Expiration Date

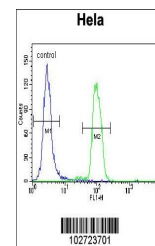
12 months from date of receipt.



Antibody is used in Western blot to dete...



Western blot analysis of P38 using P38 A...



Flow cytometric analysis of HeLa cells (...)