
Product Datasheet

CSF1R Antibody (orb1263105)

Description

CSF1R Antibody

Species/Host

Rabbit

Reactivity

Human

Conjugation

Unconjugated

Tested Applications

FC, IF, WB

Immunogen

This CSF1R antibody is generated from rabbits immunized with CSF1R recombinant protein.

Target

CSF1R

Preservatives

Supplied in PBS with 0.09% (W/V) sodium azide.

Form/Appearance

Liquid

Concentration

batch dependent

Storage

Store at 4°C for three months and -20°C, stable for up to one year. As with all antibodies care should be taken to avoid repeated freeze thaw cycles. Antibodies should not be exposed to prolonged high temperatures.

Note

For research use only

Application notes

For WB starting dilution is: 1:1000
For IF starting dilution is: 1:10~50
For FACS starting dilution is: 1:10~50

Isotype

Rabbit Ig

Clonality

Polyclonal

MW

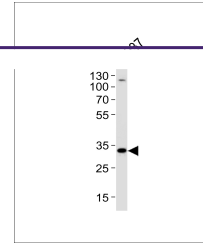
108 kDa

Uniprot ID
[P07333](#)
NCBI
[P07333](#)
Dilution Range

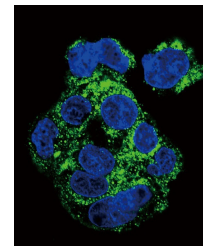
For WB starting dilution is: 1:1000
For IF starting dilution is: 1:10~50
For FACS starting dilution is: 1:10~50

Expiration Date

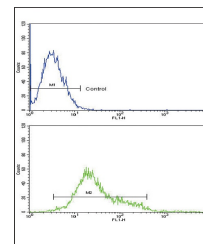
12 months from date of receipt.



Western blot analysis of lysate from U-9...



Confocal immunofluorescent analysis of C...



Flow cytometric analysis of k562 cells (...)