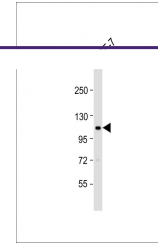
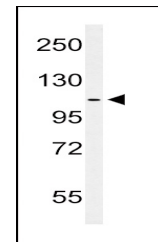

Product Datasheet

EPHA2 Antibody (orb1263100)

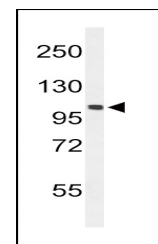
Description	EPhA2 Antibody
Species/Host	Rabbit
Reactivity	Human, Mouse
Conjugation	Unconjugated
Tested Applications	FC, IHC-P, WB
Immunogen	This EphA2 antibody is generated from rabbits immunized with a KLH conjugated synthetic peptide between 30-60 amino acids from the N-terminal region of human EphA2.
Target	EPhA2
Preservatives	Supplied in PBS with 0.09% (W/V) sodium azide.
Form/Appearance	Liquid
Concentration	batch dependent
Storage	Store at 4°C for three months and -20°C, stable for up to one year. As with all antibodies care should be taken to avoid repeated freeze thaw cycles. Antibodies should not be exposed to prolonged high temperatures.
Note	For research use only
Application notes	For WB starting dilution is: 1:1000For FACS starting dilution is: 1:10~50For IHC-P starting dilution is: 1:50~100
Isotype	Rabbit Ig
Clonality	Polyclonal
MW	108 kDa
Uniprot ID	P29317
NCBI	P29317
Dilution Range	For WB starting dilution is: 1:1000For FACS starting dilution is: 1:10~50For IHC-P starting dilution is: 1:50~100
Expiration Date	12 months from date of receipt.



Western Blot at 1:1000 dilution + MCF-7 ...



Western blot analysis of hEPhA2-T45 in M...



Western blot analysis of hEPhA2-T45 in m...