

---

## Product Datasheet

### EPHA4 Antibody (orb1263096)

**Description**

EPHA4 Antibody

**Species/Host**

Rabbit

**Reactivity**

Human

**Conjugation**

Unconjugated

**Tested Applications**

FC, IF, IHC-P, WB

**Immunogen**

This EphA4 antibody is generated from rabbits immunized with a KLH conjugated synthetic peptide between 40-70 amino acids from the N-terminal region of human EphA4.

**Target**

EPHA4

**Preservatives**

Supplied in PBS with 0.09% (W/V) sodium azide.

**Form/Appearance**

Liquid

**Concentration**

batch dependent

**Storage**

Store at 4°C for three months and -20°C, stable for up to one year. As with all antibodies care should be taken to avoid repeated freeze thaw cycles. Antibodies should not be exposed to prolonged high temperatures.

**Note**

For research use only

**Application notes**

For WB starting dilution is: 1:1000  
For IF starting dilution is: 1:100  
For FACS starting dilution is: 1:10~50  
For IHC-P starting dilution is: 1:50~100

**Isotype**

Rabbit Ig

**Clonality**

Polyclonal

**MW**

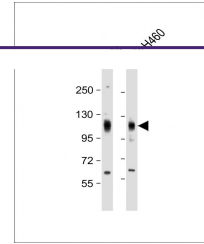
110 kDa

**Uniprot ID**
[P54764](#)
**NCBI**
[P54764](#)
**Dilution Range**

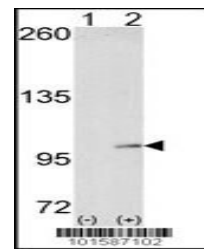
For WB starting dilution is: 1:1000  
For IF starting dilution is: 1:100  
For FACS starting dilution is: 1:10~50  
For IHC-P starting dilution is: 1:50~100

**Expiration Date**

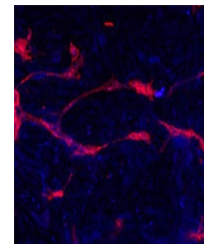
12 months from date of receipt.



Western Blot at 1:2000 dilution  
Lane 1: ...



Western blot analysis of EphA4 using Eph...



Methanol/Acetone fixed human stem cell i...