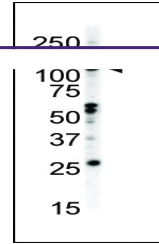
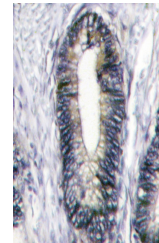

Product Datasheet

EPHB2 Antibody (orb1263082)

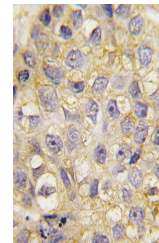
Description	EPHB2 Antibody
Species/Host	Rabbit
Reactivity	Human
Conjugation	Unconjugated
Tested Applications	IF, IHC-P, WB
Immunogen	This EphB2 antibody is generated from rabbits immunized with a KLH conjugated synthetic peptide between 1021-1050 amino acids from the C-terminal region of human EphB2.
Target	EPHB2
Preservatives	Supplied in PBS with 0.09% (W/V) sodium azide.
Form/Appearance	Liquid
Concentration	batch dependent
Storage	Store at 4°C for three months and -20°C, stable for up to one year. As with all antibodies care should be taken to avoid repeated freeze thaw cycles. Antibodies should not be exposed to prolonged high temperatures.
Note	For research use only
Application notes	For WB starting dilution is: 1:1000For IHC-P starting dilution is: 1:10~50For IF starting dilution is: 1:10~50
Isotype	Rabbit Ig
Clonality	Polyclonal
MW	117 kDa
Uniprot ID	P29323
NCBI	P29323
Dilution Range	For WB starting dilution is: 1:1000For IHC-P starting dilution is: 1:10~50For IF starting dilution is: 1:10~50
Expiration Date	12 months from date of receipt.



Western blot analysis of anti-EphB2 C-terminus.



Formalin-fixed and paraffin-embedded human tissue.



Formalin-fixed and paraffin-embedded human tissue.