
Product Datasheet

FGFR1 Antibody (orb1263060)

Description

FGFR1 Antibody

Species/Host

Rabbit

Reactivity

Human, Mouse

Conjugation

Unconjugated

Tested Applications

FC, IF, IHC-P, WB

Immunogen

This FGFR1 antibody is generated from rabbits immunized with a KLH conjugated synthetic peptide between 19~48 amino acids from the N-terminal region of human FGFR1.

Target

FGFR1

Preservatives

Supplied in PBS with 0.09% (W/V) sodium azide.

Form/Appearance

Liquid

Concentration

batch dependent

Storage

Store at 4°C for three months and -20°C, stable for up to one year. As with all antibodies care should be taken to avoid repeated freeze thaw cycles. Antibodies should not be exposed to prolonged high temperatures.

Note

For research use only

Application notes

For FACS starting dilution is: 1:10~50
For WB starting dilution is: 1:1000
For IHC-P starting dilution is: 1:50~100
For IF starting dilution is: 1:50~100

Isotype

Rabbit Ig

Clonality

Polyclonal

MW

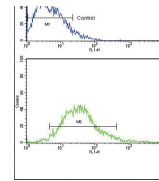
92 kDa

Uniprot ID
[P11362](#)
NCBI
[P11362](#)
Dilution Range

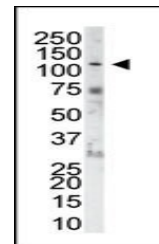
For FACS starting dilution is: 1:10~50
For WB starting dilution is: 1:1000
For IHC-P starting dilution is: 1:50~100
For IF starting dilution is: 1:50~100

Expiration Date

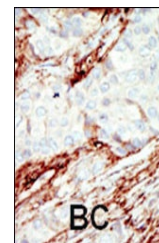
12 months from date of receipt.



Flow cytometric analysis of MCF-7 cells ...



Antibody is used in Western blot to dete...



Formalin-fixed and paraffin-embedded hum...