
Product Datasheet

FGFR2 Antibody (orb1263054)

Description

FGFR2 Antibody

Species/Host

Rabbit

Reactivity

Human, Mouse

Conjugation

Unconjugated

Tested

FC, IF, IHC-P, WB

Applications
Immunogen

This FGFR2 antibody is generated from rabbits immunized with a KLH conjugated synthetic peptide between 22-51 amino acids from the N-terminal region of human FGFR2.

Target

FGFR2

Preservatives

Supplied in PBS with 0.09% (W/V) sodium azide.

Form/Appearance

Liquid

Concentration

batch dependent

Storage

Store at 4°C for three months and -20°C, stable for up to one year. As with all antibodies care should be taken to avoid repeated freeze thaw cycles. Antibodies should not be exposed to prolonged high temperatures.

Note

For research use only

Application notes

For WB starting dilution is: 1:1000-1:2000
For IF starting dilution is: 1:25
For IHC-P starting dilution is: 1:25
For FACS starting dilution is: 1:10~50

Isotype

Rabbit IgG

Clonality

Polyclonal

MW

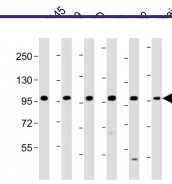
92 kDa

Uniprot ID
[P21802](#)
NCBI
[P21802](#)
Dilution Range

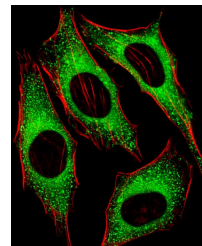
For WB starting dilution is: 1:1000-1:2000
For IF starting dilution is: 1:25
For IHC-P starting dilution is: 1:25
For FACS starting dilution is: 1:10~50

Expiration Date

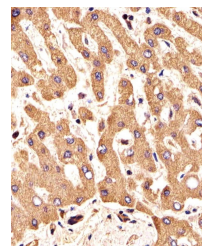
12 months from date of receipt.



Western Blot at 1:1000-1:2000 dilution L...



Fluorescent image of HeLa cells stained ...



Immunohistochemical analysis of paraffin...