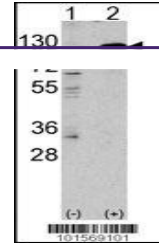
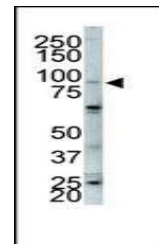

Product Datasheet

FGFR2 Antibody (orb1263053)

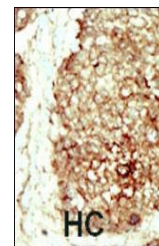
Description	FGFR2 Antibody
Species/Host	Rabbit
Reactivity	Human
Conjugation	Unconjugated
Tested Applications	FC, IF, IHC-P, WB
Immunogen	This FGFR2 antibody is generated from rabbits immunized with a KLH conjugated synthetic peptide between 794-821 amino acids from the C-terminal region of human FGFR2.
Target	FGFR2
Preservatives	Supplied in PBS with 0.09% (W/V) sodium azide.
Form/Appearance	Liquid
Concentration	batch dependent
Storage	Store at 4°C for three months and -20°C, stable for up to one year. As with all antibodies care should be taken to avoid repeated freeze thaw cycles. Antibodies should not be exposed to prolonged high temperatures.
Note	For research use only
Application notes	For WB starting dilution is: 1:1000For IHC-P starting dilution is: 1:50~100For FACS starting dilution is: 1:10~50For IF starting dilution is: 1:10~50
Isotype	Rabbit Ig
Clonality	Polyclonal
MW	92 kDa
Uniprot ID	P21802
NCBI	P21802
Dilution Range	For WB starting dilution is: 1:1000For IHC-P starting dilution is: 1:50~100For FACS starting dilution is: 1:10~50For IF starting dilution is: 1:10~50
Expiration Date	12 months from date of receipt.



Western blot analysis of anti-hFGFR2-C80...



Western blot analysis of anti-FGFR2 Pab ...



Formalin-fixed and paraffin-embedded hum...