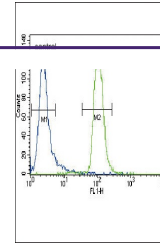
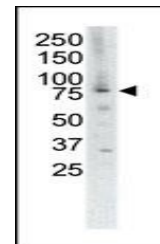

Product Datasheet

MUSK Antibody (orb1263027)

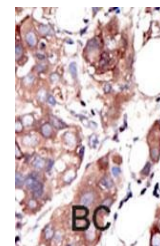
Description	MUSK Antibody
Species/Host	Rabbit
Reactivity	Human
Conjugation	Unconjugated
Tested Applications	FC, IHC-P, WB
Immunogen	This MUSK antibody is generated from rabbits immunized with a KLH conjugated synthetic peptide between 829-859 amino acids from the C-terminal region of human MUSK.
Target	MUSK
Preservatives	Supplied in PBS with 0.09% (W/V) sodium azide.
Form/Appearance	Liquid
Concentration	batch dependent
Storage	Store at 4°C for three months and -20°C, stable for up to one year. As with all antibodies care should be taken to avoid repeated freeze thaw cycles. Antibodies should not be exposed to prolonged high temperatures.
Note	For research use only
Application notes	For FACS starting dilution is: 1:10~50For WB starting dilution is: 1:1000For IHC-P starting dilution is: 1:50~100
Isotype	Rabbit Ig
Clonality	Polyclonal
MW	97 kDa
Uniprot ID	O15146
NCBI	O15146
Dilution Range	For FACS starting dilution is: 1:10~50For WB starting dilution is: 1:1000For IHC-P starting dilution is: 1:50~100
Expiration Date	12 months from date of receipt.



Flow cytometric analysis of CEM cells (r...



Western blot analysis of anti-MUSK Pab i...



Formalin-fixed and paraffin-embedded hum...