

---

## Product Datasheet

### PDGFRA Antibody (orb1263024)

**Description**

PDGFRA Antibody

**Species/Host**

Rabbit

**Reactivity**

Human

**Conjugation**

Unconjugated

**Tested Applications**

IHC-P, WB

**Immunogen**

This PDGFRA antibody is generated from rabbits immunized with a KLH conjugated synthetic peptide between 698-727 amino acids from human PDGFRA.

**Target**

PDGFRA

**Preservatives**

Supplied in PBS with 0.09% (W/V) sodium azide.

**Form/Appearance**

Liquid

**Concentration**

batch dependent

**Storage**

Store at 4°C for three months and -20°C, stable for up to one year. As with all antibodies care should be taken to avoid repeated freeze thaw cycles. Antibodies should not be exposed to prolonged high temperatures.

**Note**

For research use only

**Application notes**

For IHC-P starting dilution is: 1:25 For WB starting dilution is: 1:1000

**Isotype**

Rabbit Ig

**Clonality**

Polyclonal

**MW**

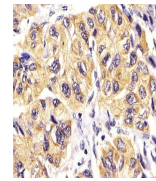
123 kDa

**Uniprot ID**
[P16234](#)
**NCBI**
[P16234](#)
**Dilution Range**

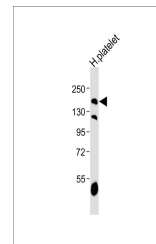
For IHC-P starting dilution is: 1:25 For WB starting dilution is: 1:1000

**Expiration Date**

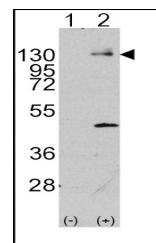
12 months from date of receipt.



Antibody staining PDGFRA in Human hepato...



Western Blot at 1:1000 dilution + human ...



Western blot analysis of PDGFRA using ra...