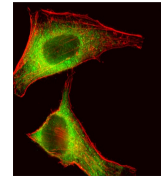
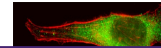
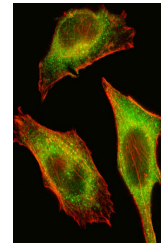

Product Datasheet

TEC Antibody (orb1262976)

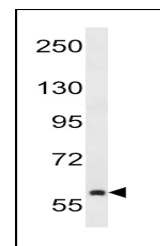
Description	TEC Antibody
Species/Host	Rabbit
Reactivity	Human, Mouse
Conjugation	Unconjugated
Tested Applications	IF, IHC-P, WB
Immunogen	This TEC antibody is generated from rabbits immunized with a KLH conjugated synthetic peptide between 175-205 amino acids from the Central region of human TEC.
Target	TEC
Preservatives	Supplied in PBS with 0.09% (W/V) sodium azide.
Form/Appearance	Liquid
Concentration	batch dependent
Storage	Store at 4°C for three months and -20°C, stable for up to one year. As with all antibodies care should be taken to avoid repeated freeze thaw cycles. Antibodies should not be exposed to prolonged high temperatures.
Note	For research use only
Application notes	For IF starting dilution is: 1:10~50For WB starting dilution is: 1:1000For IHC-P starting dilution is: 1:50~100
Isotype	Rabbit Ig
Clonality	Polyclonal
MW	74 kDa
Uniprot ID	P42680
NCBI	P42680
Dilution Range	For IF starting dilution is: 1:10~50For WB starting dilution is: 1:1000For IHC-P starting dilution is: 1:50~100
Expiration Date	12 months from date of receipt.



Fluorescent image of HeLa cell stained w...



Fluorescent image of HeLa cell stained w...



Western blot analysis in NCI-H292 cell l...