
Product Datasheet

HIF1A Antibody (orb1262960)

Description

HIF1A Antibody

Species/Host

Rabbit

Reactivity

Human, Mouse

Conjugation

Unconjugated

Tested Applications

IF, IHC-P, WB

Immunogen

This HIF1Alpha antibody is generated from rabbits immunized with a KLH conjugated synthetic peptide between 728-757 amino acids from the C-terminal region of human HIF1Alpha.

Target

HIF1A

Preservatives

Supplied in PBS with 0.09% (W/V) sodium azide.

Form/Appearance

Liquid

Concentration

batch dependent

Storage

Store at 4°C for three months and -20°C, stable for up to one year. As with all antibodies care should be taken to avoid repeated freeze thaw cycles. Antibodies should not be exposed to prolonged high temperatures.

Note

For research use only

Application notes

For WB starting dilution is: 1:1000
For IF starting dilution is: 1:10~50
For IHC-P starting dilution is: 1:10~50

Isotype

Rabbit Ig

Clonality

Polyclonal

MW

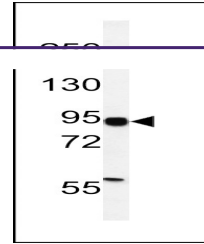
93 kDa

Uniprot ID
[Q16665](https://www.uniprot.org/uniprot/Q16665)
NCBI
[Q16665](https://www.ncbi.nlm.nih.gov/nuccore/Q16665)
Dilution Range

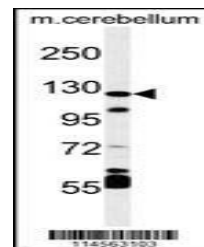
For WB starting dilution is: 1:1000
For IF starting dilution is: 1:10~50
For IHC-P starting dilution is: 1:10~50

Expiration Date

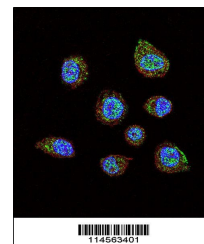
12 months from date of receipt.



Western blot analysis of HIF1Alpha Antib...



Western blot analysis of HIF1Alpha Antib...



Confocal immunofluorescent analysis of H...