

---

## Product Datasheet

### HIF1A Antibody (orb1262959)

**Description**

HIF1A Antibody

**Species/Host**

Rabbit

**Reactivity**

Human, Mouse

**Conjugation**

Unconjugated

**Tested Applications**

FC, IF, IHC-P, WB

**Immunogen**

This HIF1Alpha antibody is generated from rabbits immunized with a KLH conjugated synthetic peptide between 519-547 amino acids from the Central region of human HIF1Alpha.

**Target**

HIF1A

**Preservatives**

Supplied in PBS with 0.09% (W/V) sodium azide.

**Form/Appearance**

Liquid

**Concentration**

batch dependent

**Storage**

Store at 4°C for three months and -20°C, stable for up to one year. As with all antibodies care should be taken to avoid repeated freeze thaw cycles. Antibodies should not be exposed to prolonged high temperatures.

**Note**

For research use only

**Application notes**

For WB starting dilution is: 1:250  
For IHC-P starting dilution is: 1:50~100  
For IF starting dilution is: 1:10~50  
For FACS starting dilution is: 1:10~50

**Isotype**

Rabbit Ig

**Clonality**

Polyclonal

**MW**

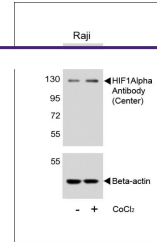
93 kDa

**Uniprot ID**
[Q16665](#)
**NCBI**
[Q16665](#)
**Dilution Range**

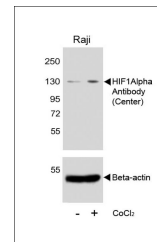
For WB starting dilution is: 1:250  
For IHC-P starting dilution is: 1:50~100  
For IF starting dilution is: 1:10~50  
For FACS starting dilution is: 1:10~50

**Expiration Date**

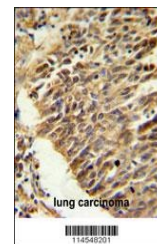
12 months from date of receipt.



Western blot analysis of lysates from Ra...



Western blot analysis of lysates from Ra...



HIF1Alpha Antibody IHC analysis in forma...