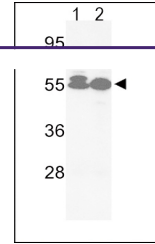
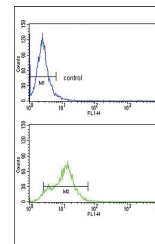

Product Datasheet

ACVRL1 Antibody (orb1262932)

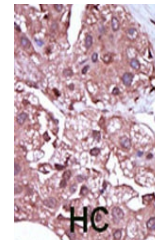
Description	ACVRL1 Antibody
Species/Host	Rabbit
Reactivity	Human
Conjugation	Unconjugated
Tested Applications	FC, IHC-P, WB
Immunogen	This ACVRL1 antibody is generated from rabbits immunized with a KLH conjugated synthetic peptide between 474-503 amino acids from the C-terminal region of human ACVRL1.
Target	ACVRL1
Preservatives	Supplied in PBS with 0.09% (W/V) sodium azide.
Form/Appearance	Liquid
Concentration	batch dependent
Storage	Store at 4°C for three months and -20°C, stable for up to one year. As with all antibodies care should be taken to avoid repeated freeze thaw cycles. Antibodies should not be exposed to prolonged high temperatures.
Note	For research use only
Application notes	For WB starting dilution is: 1:1000For FACS starting dilution is: 1:10~50For IHC-P starting dilution is: 1:50~100
Isotype	Rabbit Ig
Clonality	Polyclonal
MW	56 kDa
Uniprot ID	P37023
NCBI	P37023
Dilution Range	For WB starting dilution is: 1:1000For FACS starting dilution is: 1:10~50For IHC-P starting dilution is: 1:50~100
Expiration Date	12 months from date of receipt.



Western blot analysis of hACVRL1-L489 in...



Flow cytometry analysis of HepG2 cells (...)



Formalin-fixed and paraffin-embedded hum...