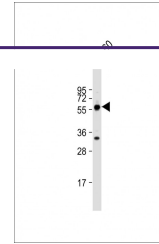
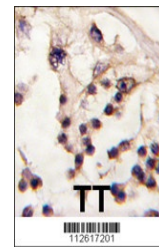

Product Datasheet

TESK2 Antibody (orb1262929)

Description	TESK2 Antibody
Species/Host	Rabbit
Reactivity	Human
Conjugation	Unconjugated
Tested Applications	IHC-P, WB
Immunogen	This TESK2 antibody is generated from rabbits immunized with a KLH conjugated synthetic peptide between 210-240 amino acids from the Central region of human TESK2.
Target	TESK2
Preservatives	Supplied in PBS with 0.09% (W/V) sodium azide.
Form/Appearance	Liquid
Concentration	batch dependent
Storage	Store at 4°C for three months and -20°C, stable for up to one year. As with all antibodies care should be taken to avoid repeated freeze thaw cycles. Antibodies should not be exposed to prolonged high temperatures.
Note	For research use only
Application notes	For WB starting dilution is: 1:500For IHC-P starting dilution is: 1:10~50
Isotype	Rabbit Ig
Clonality	Polyclonal
MW	64 kDa
Uniprot ID	Q96S53
NCBI	Q96S53
Dilution Range	For WB starting dilution is: 1:500For IHC-P starting dilution is: 1:10~50
Expiration Date	12 months from date of receipt.



Western Blot at 1:500 dilution + HL-60 w...



Formalin-fixed and paraffin-embedded hum...