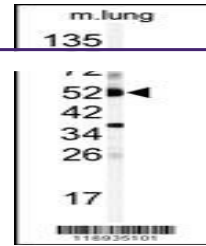
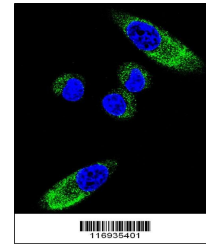

Product Datasheet

CYP1A1 Antibody (orb1262827)

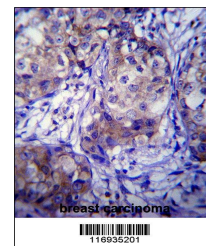
Description	CYP1A1 Antibody
Species/Host	Rabbit
Reactivity	Human, Mouse
Conjugation	Unconjugated
Tested Applications	IF, IHC-P, WB
Immunogen	This CYP1A1 antibody is generated from rabbits immunized with a KLH conjugated synthetic peptide between 252-280 amino acids from the Central region of human CYP1A1.
Target	CYP1A1
Preservatives	Supplied in PBS with 0.09% (W/V) sodium azide.
Form/Appearance	Liquid
Concentration	batch dependent
Storage	Store at 4°C for three months and -20°C, stable for up to one year. As with all antibodies care should be taken to avoid repeated freeze thaw cycles. Antibodies should not be exposed to prolonged high temperatures.
Note	For research use only
Application notes	For WB starting dilution is: 1:1000For IF starting dilution is: 1:10~50For IHC-P starting dilution is: 1:10~50
Isotype	Rabbit Ig
Clonality	Polyclonal
MW	58 kDa
Uniprot ID	P04798
NCBI	P04798
Dilution Range	For WB starting dilution is: 1:1000For IF starting dilution is: 1:10~50For IHC-P starting dilution is: 1:10~50
Expiration Date	12 months from date of receipt.



Western blot analysis of anti-CYP1A1 Ant...



Confocal immunofluorescent analysis of C...



CYP1A1 Antibody immunohistochemistry ana...