
Product Datasheet

PIK3R3 Antibody (orb1262799)

Description

PIK3R3 Antibody

Species/Host

Rabbit

Reactivity

Human

Conjugation

Unconjugated

Tested Applications

IF, IHC-P, WB

Immunogen

This PIK3R3 antibody is generated from rabbits immunized with a KLH conjugated synthetic peptide between 316-346 amino acids from the C-terminal region of human PIK3R3.

Target

PIK3R3

Preservatives

Supplied in PBS with 0.09% (W/V) sodium azide.

Form/Appearance

Liquid

Concentration

batch dependent

Storage

Store at 4°C for three months and -20°C, stable for up to one year. As with all antibodies care should be taken to avoid repeated freeze thaw cycles. Antibodies should not be exposed to prolonged high temperatures.

Note

For research use only

Application notes

For IF starting dilution is: 1:100
For WB starting dilution is: 1:1000
For IHC-P starting dilution is: 1:10~50

Isotype

Rabbit Ig

Clonality

Polyclonal

MW

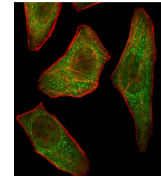
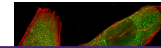
54 kDa

Uniprot ID
[Q92569](#)
NCBI
[Q92569](#)
Dilution Range

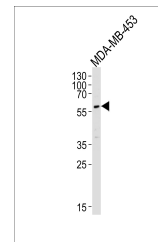
For IF starting dilution is: 1:100
For WB starting dilution is: 1:1000
For IHC-P starting dilution is: 1:10~50

Expiration Date

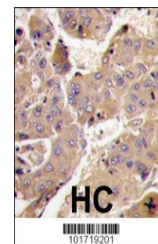
12 months from date of receipt.



Fluorescent image of U251 cells stained ...



Western blot analysis of lysate from MDA...



Formalin-fixed and paraffin-embedded hum...