
Product Datasheet

PACSIN2 Antibody (orb1262761)

Description

PACSIN2 Antibody

Species/Host

Rabbit

Reactivity

Human, Mouse

Conjugation

Unconjugated

Tested

IF, IHC-P, WB

Applications
Immunogen

This PACSIN2 antibody is generated from rabbits immunized with a KLH conjugated synthetic peptide between 342-371 amino acids from the C-terminal region of human PACSIN2.

Target

PACSIN2

Preservatives

Supplied in PBS with 0.09% (W/V) sodium azide.

Form/Appearance

Liquid

Concentration

batch dependent

Storage

Store at 4°C for three months and -20°C, stable for up to one year. As with all antibodies care should be taken to avoid repeated freeze thaw cycles. Antibodies should not be exposed to prolonged high temperatures.

Note

For research use only

Application notes

For IHC-P starting dilution is: 1:25
For IF starting dilution is: 1:100
For WB starting dilution is: 1:1000

Isotype

Rabbit Ig

Clonality

Polyclonal

MW

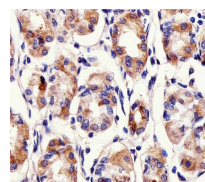
56 kDa

Uniprot ID
[Q9UNF0](#)
NCBI
[Q9UNF0](#)
Dilution Range

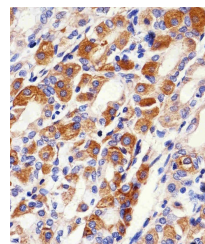
For IHC-P starting dilution is: 1:25
For IF starting dilution is: 1:100
For WB starting dilution is: 1:1000

Expiration Date

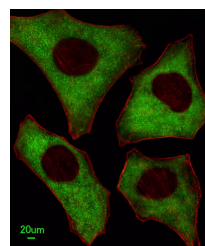
12 months from date of receipt.



Immunohistochemical analysis of paraffin...



Immunohistochemical analysis of paraffin...



Immunofluorescent analysis of HeLa cells...