
Product Datasheet

PFKM Antibody (orb1262733)

Description

PFKM Antibody

Species/Host

Rabbit

Reactivity

Human

Conjugation

Unconjugated

Tested Applications

IF, IHC-P, WB

Immunogen

This Fructose 6 Phosphate Kinase (PFKM) antibody is generated from rabbits immunized with a KLH conjugated synthetic peptide between 746-776 amino acids from the C-terminal region of human Fructose 6 Phosphate Kinase (PFKM).

Target

PFKM

Preservatives

Supplied in PBS with 0.09% (W/V) sodium azide.

Form/Appearance

Liquid

Concentration

batch dependent

Storage

Store at 4°C for three months and -20°C, stable for up to one year. As with all antibodies care should be taken to avoid repeated freeze thaw cycles. Antibodies should not be exposed to prolonged high temperatures.

Note

For research use only

Application notes

For WB starting dilution is: 1:1000
For IHC-P starting dilution is: 1:50~100
For IF starting dilution is: 1:10~50

Isotype

Rabbit Ig

Clonality

Polyclonal

MW

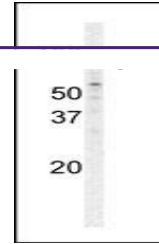
85 kDa

Uniprot ID
[P08237](#)
NCBI
[P08237](#)
Dilution Range

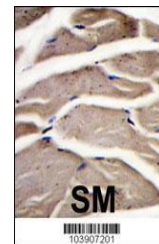
For WB starting dilution is: 1:1000
For IHC-P starting dilution is: 1:50~100
For IF starting dilution is: 1:10~50

Expiration Date

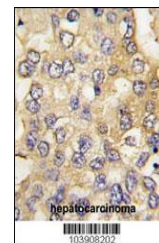
12 months from date of receipt.



Western blot analysis of PFKM polyclonal...



Formalin-fixed and paraffin-embedded hum...



Formalin-fixed and paraffin-embedded hum...