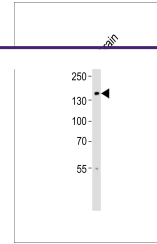
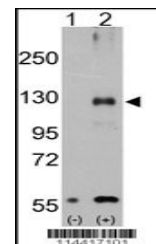

Product Datasheet

TRPM8 Antibody (orb1262698)

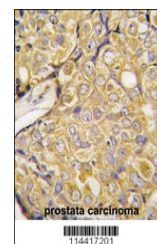
Description	TRPM8 Antibody
Species/Host	Rabbit
Reactivity	Human
Conjugation	Unconjugated
Tested Applications	IHC-P, WB
Immunogen	This TRPM8 antibody is generated from rabbits immunized with a KLH conjugated synthetic peptide between 521-552 amino acids from the Central region of human TRPM8.
Target	TRPM8
Preservatives	Supplied in PBS with 0.09% (W/V) sodium azide.
Form/Appearance	Liquid
Concentration	batch dependent
Storage	Store at 4°C for three months and -20°C, stable for up to one year. As with all antibodies care should be taken to avoid repeated freeze thaw cycles. Antibodies should not be exposed to prolonged high temperatures.
Note	For research use only
Application notes	For WB starting dilution is: 1:1000 For IHC-P starting dilution is: 1:10~50
Isotype	Rabbit Ig
Clonality	Polyclonal
MW	128 kDa
Uniprot ID	Q7Z2W7
NCBI	Q7Z2W7
Dilution Range	For WB starting dilution is: 1:1000 For IHC-P starting dilution is: 1:10~50
Expiration Date	12 months from date of receipt.



Western blot analysis of lysate from hum...



Western blot analysis of TRPM8 using rab...



Formalin-fixed and paraffin-embedded hum...