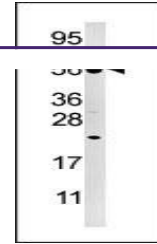
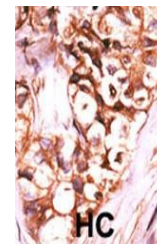

Product Datasheet

DUSP8 Antibody (orb1262674)

Description	DUSP8 Antibody
Species/Host	Rabbit
Reactivity	Human
Conjugation	Unconjugated
Tested Applications	IHC-P, WB
Immunogen	This DUSP8 antibody is generated from rabbits immunized with a KLH conjugated synthetic peptide between 456-487 amino acids from the C-terminal region of human DUSP8.
Target	DUSP8
Preservatives	Supplied in PBS with 0.09% (W/V) sodium azide.
Form/Appearance	Liquid
Concentration	batch dependent
Storage	Store at 4°C for three months and -20°C, stable for up to one year. As with all antibodies care should be taken to avoid repeated freeze thaw cycles. Antibodies should not be exposed to prolonged high temperatures.
Note	For research use only
Application notes	For WB starting dilution is: 1:1000For IHC-P starting dilution is: 1:50~100
Isotype	Rabbit Ig
Clonality	Polyclonal
MW	66 kDa
Uniprot ID	Q13202
NCBI	Q13202
Dilution Range	For WB starting dilution is: 1:1000For IHC-P starting dilution is: 1:50~100
Expiration Date	12 months from date of receipt.



Western blot analysis of anti-DUSP8 Pabi...



Formalin-fixed and paraffin-embedded hum...