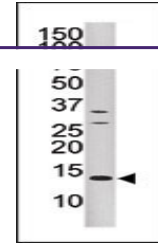
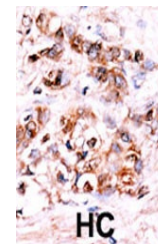

Product Datasheet

DUSP15 Antibody (orb1262671)

Description	DUSP15 Antibody
Species/Host	Rabbit
Reactivity	Human
Conjugation	Unconjugated
Tested Applications	IHC-P, WB
Immunogen	This DUSP15 antibody is generated from rabbits immunized with a KLH conjugated synthetic peptide between 17-44 amino acids from the N-terminal region of human DUSP15.
Target	DUSP15
Preservatives	Supplied in PBS with 0.09% (W/V) sodium azide.
Form/Appearance	Liquid
Concentration	batch dependent
Storage	Store at 4°C for three months and -20°C, stable for up to one year. As with all antibodies care should be taken to avoid repeated freeze thaw cycles. Antibodies should not be exposed to prolonged high temperatures.
Note	For research use only
Application notes	For WB starting dilution is: 1:1000 For IHC-P starting dilution is: 1:50~100
Isotype	Rabbit Ig
Clonality	Polyclonal
MW	32 kDa
Uniprot ID	Q9H1R2
NCBI	Q9H1R2
Dilution Range	For WB starting dilution is: 1:1000 For IHC-P starting dilution is: 1:50~100
Expiration Date	12 months from date of receipt.



Western blot analysis of anti-DUSP15 Pab...



Formalin-fixed and paraffin-embedded hum...