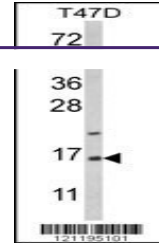
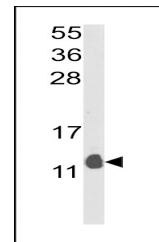

Product Datasheet

PEA15 Antibody (orb1262651)

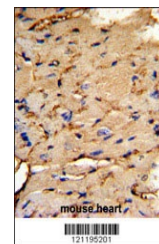
Description	PEA15 Antibody
Species/Host	Rabbit
Reactivity	Human, Mouse
Conjugation	Unconjugated
Tested Applications	FC, IHC-P, WB
Immunogen	This PEA-15 antibody is generated from rabbits immunized with a KLH conjugated synthetic peptide between 86-115 amino acids from the C-terminal region of human PEA-15.
Target	PEA15
Preservatives	Supplied in PBS with 0.09% (W/V) sodium azide.
Form/Appearance	Liquid
Concentration	batch dependent
Storage	Store at 4°C for three months and -20°C, stable for up to one year. As with all antibodies care should be taken to avoid repeated freeze thaw cycles. Antibodies should not be exposed to prolonged high temperatures.
Note	For research use only
Application notes	For WB starting dilution is: 1:1000For IHC-P starting dilution is: 1:50~100For FACS starting dilution is: 1:10~50
Isotype	Rabbit Ig
Clonality	Polyclonal
MW	15 kDa
Uniprot ID	Q15121
NCBI	Q15121
Dilution Range	For WB starting dilution is: 1:1000For IHC-P starting dilution is: 1:50~100For FACS starting dilution is: 1:10~50
Expiration Date	12 months from date of receipt.



Western blot analysis of PEA-15 Antibody...



Western blot analysis of PEA-15 Antibody...



Formalin-fixed and paraffin-embedded mou...